

# Self Leveling Machine Services

**TEAM**<sup>®</sup>



# TEAM Industrial Service

## Self-Leveling Machines Services

**Self Leveling Machines** specialize in machining very large circular and irregular shaped surfaces. Our patented designs enable us to machine diameters up to 150ft (45m) and rectangular faces up to 32ft x 100ft in a single set up.

### SELF LEVELING MACHINES

- + Circular Self Leveling Mills (CSLM & LP-CSLM )
- + Extra Large Circular Self Leveling Mill (XL-CSLM)
- + Laser Self Leveling Mill (LSLM)
- + X-Y Milling Machines
- + Symmetrical Mills

Self Leveling Machines initial designs were first utilized to machine foundation faces on guided missile launch systems on Navy frigates in 1989. Immediate market expansion began in the mining industry machining slew ring surfaces and dragline rack and roller paths. Power generation soon followed with the machining of turbine casing horizontal half joints with a single set up. We now offer solutions to a variety of industries including:

- + Mining
- + Power Generation
- + Steel
- + Marine
- + Offshore Oil & Gas
- + Fabrication
- + Process

### Self Leveling Technology:

Our machines follow a defined reference plane electronically. Utilizing the strength of the item being machined for support, we are able to minimize the structural strength and weight of our equipment. This eliminates the need for self-supporting rigid portable machines that require considerable time and engineering design to install on site.

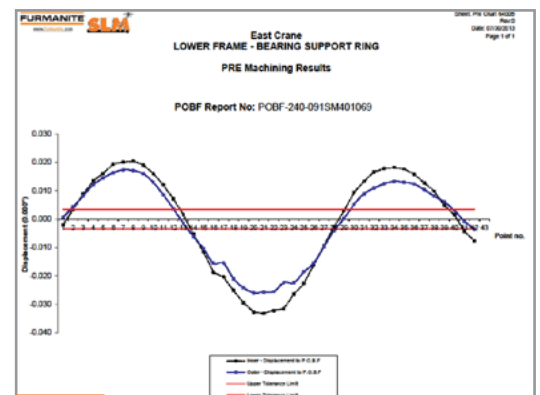


### Dimensional Control:

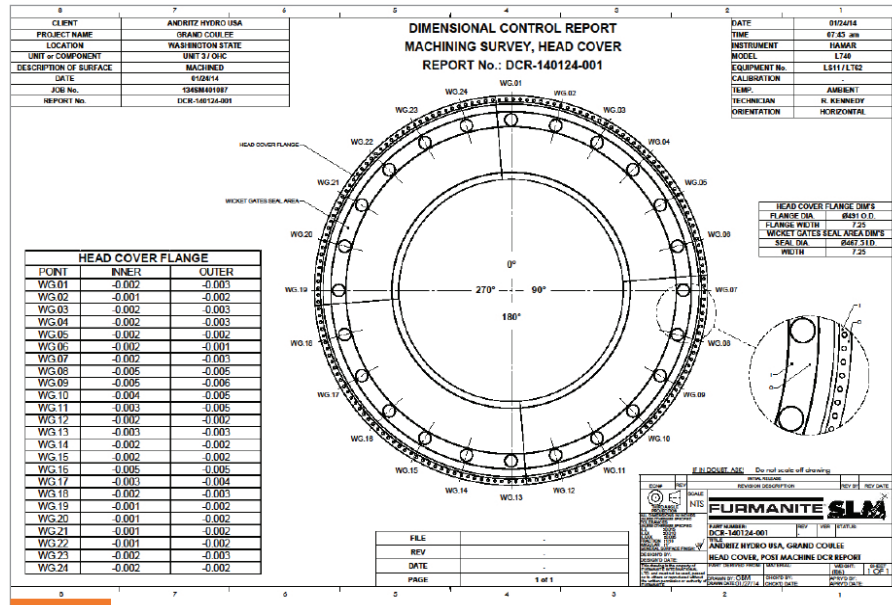
All Measurement data collected is documented and a report is generated to ensure the highest quality standards are achieved.

### Project Documentation:

Team Furmanite will provide a report prior to machining any surface. The report will be discussed with the client to determine the best, recommended machining procedure. We can machine at a given angle, or most commonly to the 'plane of best fit'. Team



Furmanite will provide a written survey report of the post machined results of all projects. The client is encouraged to witness the acquisition of survey data.



The survey results are analyzed to determine the minimum error envelope achieved. Written reports display the original data, the error from the plane of best fit and total flatness envelope.

### Mining Machining Applications:

- + Dragline Rack & Rail Pad
- + Hook Rail
- + Machinery Deck Mount Plates
- + Slew Ring Machining
- + Crusher Faces
- + Shear Ledges
- + Swing Bores
- + Hoist & Drag Assemblies
- + Propel Cases and Optical Measurement Systems

**TEAM experts are available  
24 hours a day, 7 days a week, 365 days a year.**

Find your local contact at [TeamInc.com](http://TeamInc.com).

### Why TEAM?

- + Single supplier, single point of contact worldwide
- + Company-wide commitment to safety
- + Trained and certified technicians
- + Complete range of maintenance and repair services
- + Engineering, manufacturing and technical support
- + World class quality processes and systems



[www.TeamInc.com](http://www.TeamInc.com)